

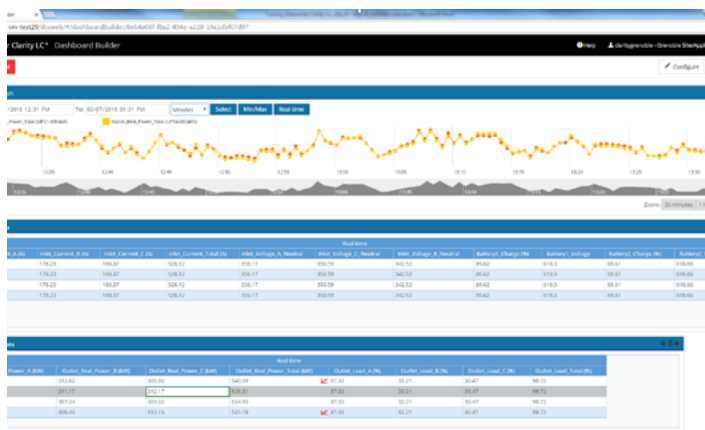
We are pleased to announce the latest release of Datacenter Clarity LC[®], version 2.3, which includes many new features and enhancements.

Dashboard Builder

Using the Dashboard Builder module, you can create customized single or multi-asset dashboards that you can view in the Dashboard Navigator.

Template-based dashboards link the dashboard to an EMIP entry and specify whether the link is established with the asset Type, Manufacturer, or Model.

Instance-based dashboards link the dashboard to an



existing asset. You search for the asset using a basic or advanced asset search.

In this module, you can create the following dashboard widgets for a custom dashboard:

- Text displays text and images in a text pane.
- Graph displays real-time and asynchronous attribute data in a trend chart format.
- Real-time Table displays real-time attribute values in a table format.

Dashboard Widget

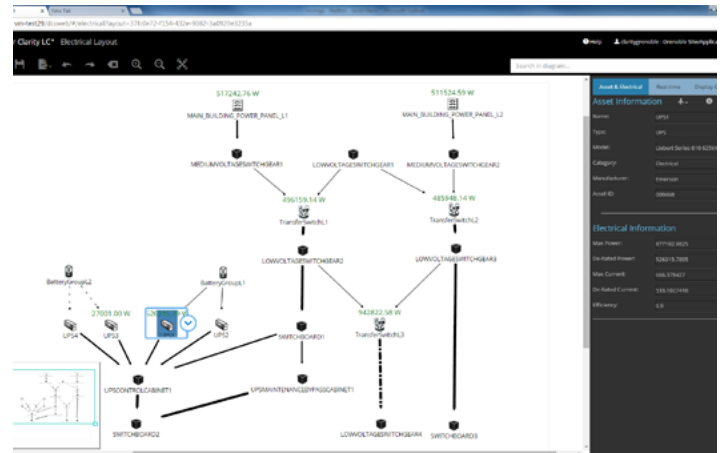
When you create a Text widget, you can add images and text to the dashboard.

When you create a Graph widget for an instance-based dashboard, you can configure a graph to monitor one asset or multiple assets and their attributes. A template-based dashboard graph monitors the attributes associated with the EMIP entry you linked to the dashboard.

When you create a Real-time Table widget for an instance-based dashboard, you can configure the table to monitor specific attributes for single or multiple assets. For example, suppose you want to monitor the temperature for a number of rack-mounted assets in a hot spot in your data center.

You would select the Operating Cooling Utilization and Rack Cooling Index attributes with which to monitor the given rack-mounted assets. A template-based dashboard Real-time Table monitors the attributes associated with the EMIP entry you linked to the dashboard.

Electrical Layout



The Electrical Layout displays a two-dimensional diagram that represents the chain of electrical connections in your 3D model.

The electrical diagram lets you identify the power and current capacity across the model.

- Displays asset and electrical attribute information.
- Display real-time data on the assets input power or current.
- Lets you modify the layout presentation.
- Exports the diagram to SVG, PNG or JPG images or print it.

Report Management

Datacenter Clarity LC web client now has a new

module: Report Management. Report Management provides standard report definitions that you can use to generate and manage asset reports for your datacenter. You can also download the report to an Excel spreadsheet.

For more information, see Report Management in the web client help files.

Access management and user permission enhancements

Only database administrators have access to the Local Users module from which they manage Datacenter Clarity LC web client's users and roles.

- You can now grant user permissions for all web client modules from the Access Management module.
- In the Local Users module, you can change the Teamcenter super user. This user has access management administrator permissions and access to ACL permissions.
- In previous versions, the Local Users module was named the Users & Roles module.
- The user interface of the Access Management module is improved.

For more information, see Access Management and Local Users in the web client help files.

Automatic generation of reports in the Asset Management Environment

The automatic reports service can now generate reports for assets modified or created in the last day, week, month, or year directly in the Asset Management Environment.

After the software generates the report and saves it in the specified folder, you receive an email in your Datacenter Clarity LC Worklist mailbox.

For more information, see Automatic reporting in the web client help files.

Non-standard rack support

Datacenter Clarity LC supports non-standard racks. You can configure the height of the 1U using the

ASSET RACK ONE U SPACE HEIGHT attribute in the EMIP library.

Additional in-rack PDU placement methods

Datacenter Clarity LC supports additional in-rack PDU placement methods. When you place in-rack PDUs on a rack wall, you can now place them in the following positions:

- On the left or right of the front of the rack.
- Two side-by-side positions on the left or right of the back of the rack.

For more information, see Create/Edit Asset in the Datacenter Clarity LC User Reference help files.

Allowing modification of port type/category for modular/pluggable devices

You can now change the port type/category as long as the port type follows these patterns: "SFP/****", "SFP+/****", "XFP/****", "GBIC/****".

You can now plug in a new module to an existing server and select the port type and category after you created this server in Datacenter Clarity LC.

For more information, see:

- Network Ports Manager in the 3D Modeling Environment section of the Datacenter Clarity LC User Reference help files.
- Create/Edit Port in the Asset Management Environment section of the Datacenter Clarity LC User Reference help files.

Additional attributes supported by attribute configurations

You can override the following attributes through attribute configurations:

- ASSET APPARENT POWER
- ASSET COOLING CAPACITY
- ASSET CURRENT NUMBER OF PHASES
- ASSET CURRENT TYPE
- ASSET DE-RATED CURRENT

- ASSET EFFICIENCY
- ASSET MAX CURRENT
- ASSET POWER FACTOR
- ASSET VENDOR DE-RATED POWER
- ASSET VENDOR MAX POWER
- ASSET VOLTAGE

Advanced search improvements

The following advanced search improvements are introduced in the web client:

- The list of available Datacenter Clarity LC filters is now related to the module you are searching in. For example, in the Dashboard Builder module, when you use the Advanced search the filter options are applicable to dashboards, such as dashboard name, author, creation date, and ID.
- You can create custom filters combining saved

search queries.

- More pre-defined filters are added to the list of Datacenter Clarity LC filters.

For more information, see Searching Datacenter Clarity LC web client.

EMIP entry validation

Datacenter Clarity LC now validates EMIP entries as you create them.

Issues Resolved in Version 2.3

Please see the Release Notes for additional details here: <http://datacenter.mayahtt.com/resources/documentation/>.

For more information about Datacenter Clarity LC[®], please visit: <http://datacenter.mayahtt.com>